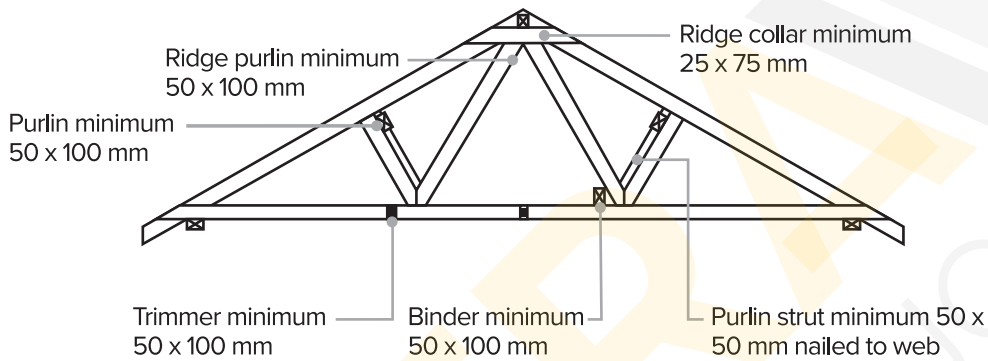


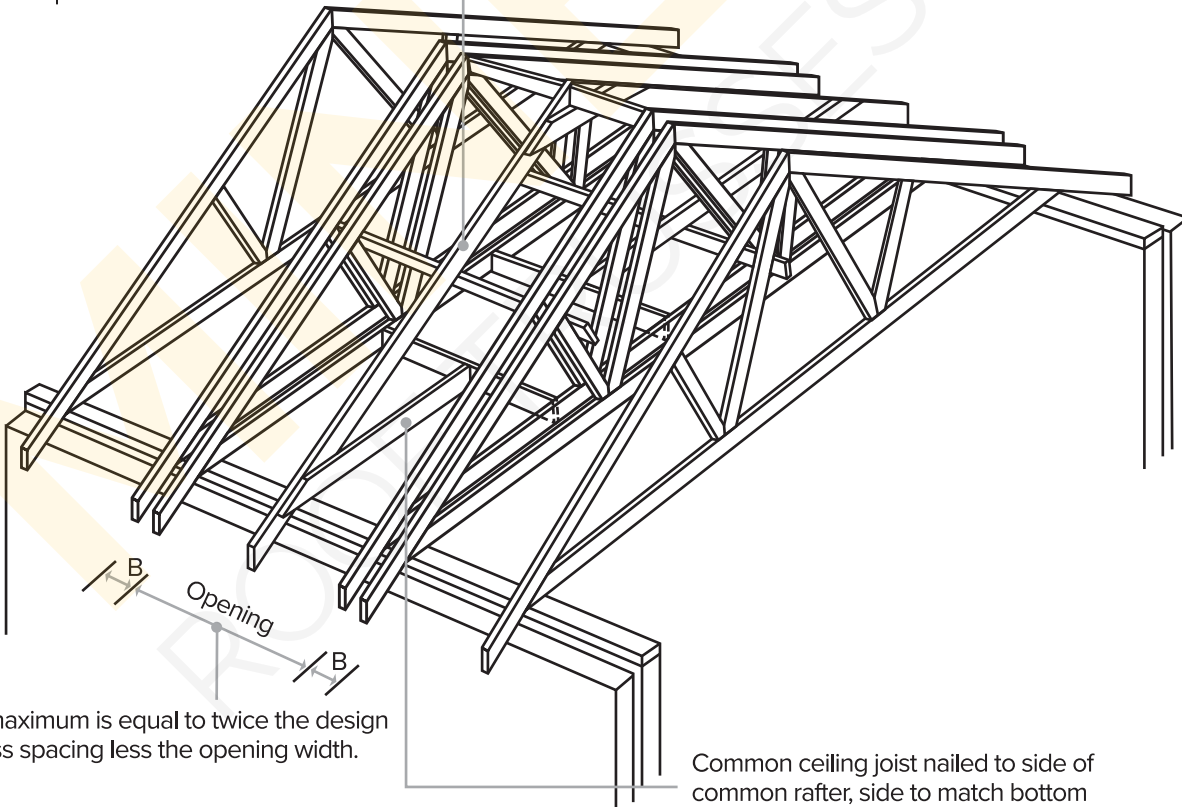
## Hatch Opening Detail for Standard Trusses

### HATCH OPENINGS

Whenever possible, hatch openings should be accommodated within the trussed rafter design spacing. When this is not possible, the method illustrated below should be used.



Common rafter 25 mm deeper than trussed rafter and birdsmouthed over wallplate.



B maximum is equal to twice the design truss spacing less the opening width.

Follow Us

