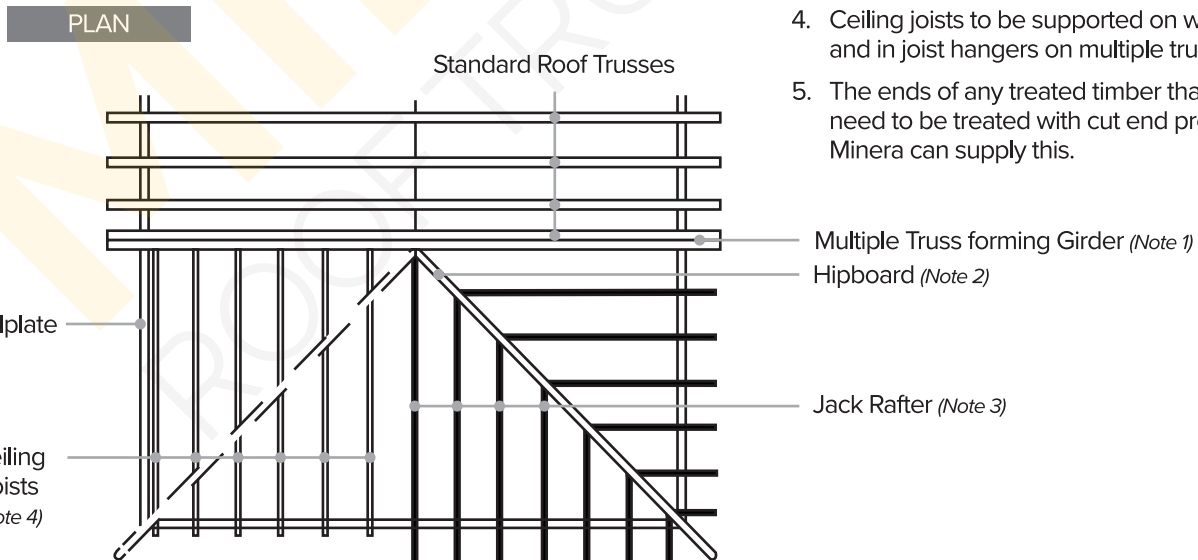
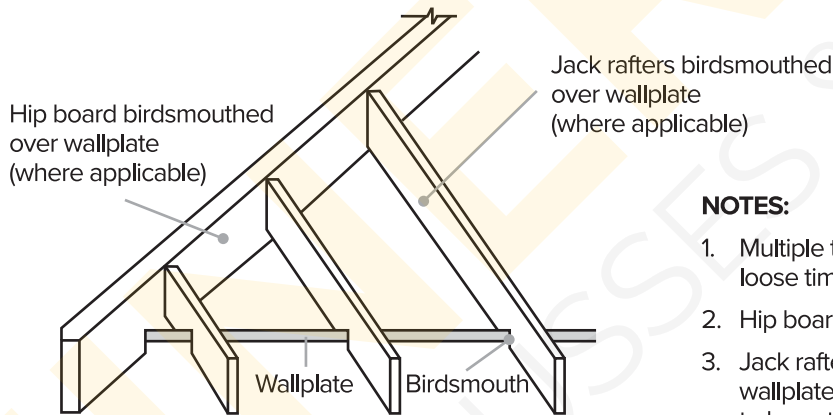
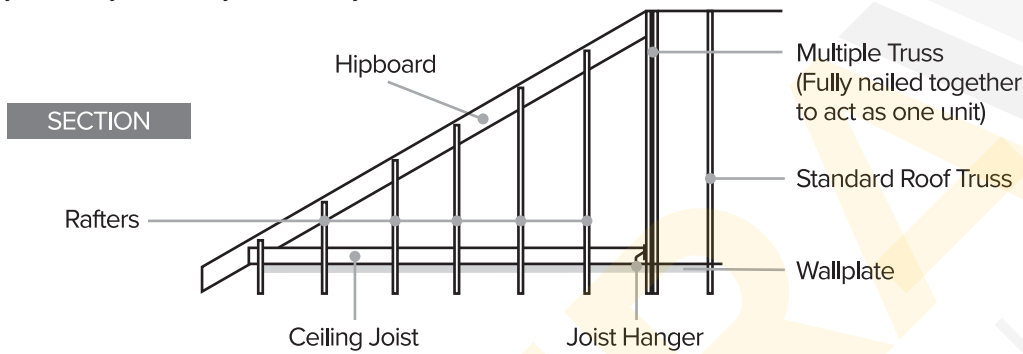


Erection of a Hipped End with Structural Timber

Detail to be read in conjunction with Minera issued roof truss layout.

- Note!** This is only a typical detail as a guide on how to construct the hip end that you have on site.
- These marks next to the trusses do not correspond with the truss marks of your roof layout. These marks are only to guide you. Always refer to your truss layout.



NOTES:

- Multiple truss at top of hip to support loose timber infill
- Hip board to be birdsmouthed over wallplate.
- Jack rafters to be birdsmouthed over wallplate to match trussed rafter roof and to be cut into hip board.
- Ceiling joists to be supported on wallplate and in joist hangers on multiple truss.
- The ends of any treated timber that is cut need to be treated with cut end preservative - Minera can supply this.

Follow Us

