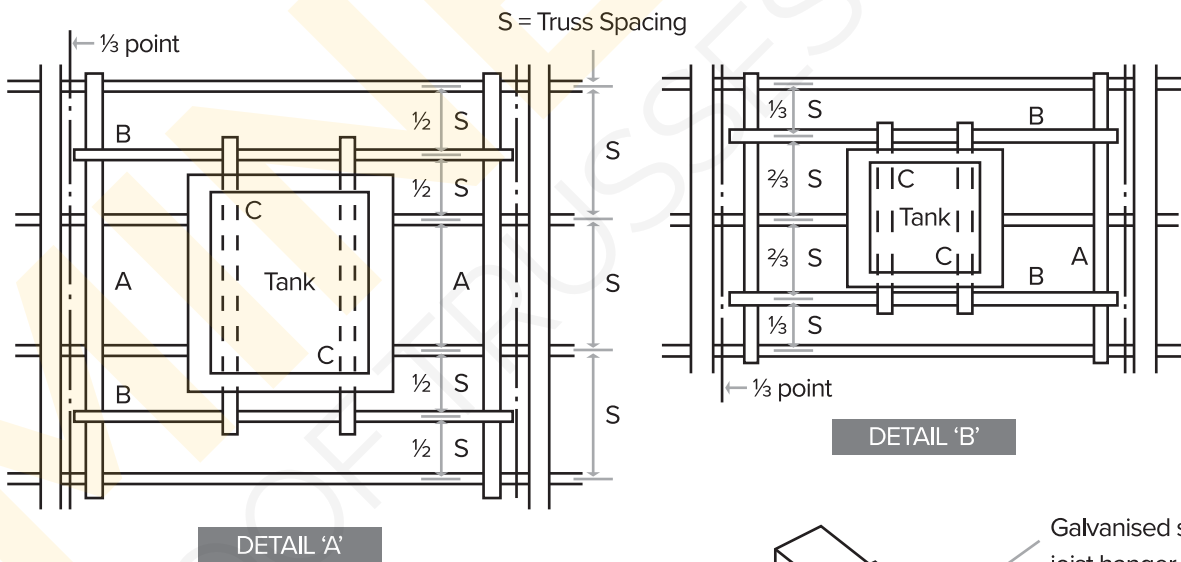
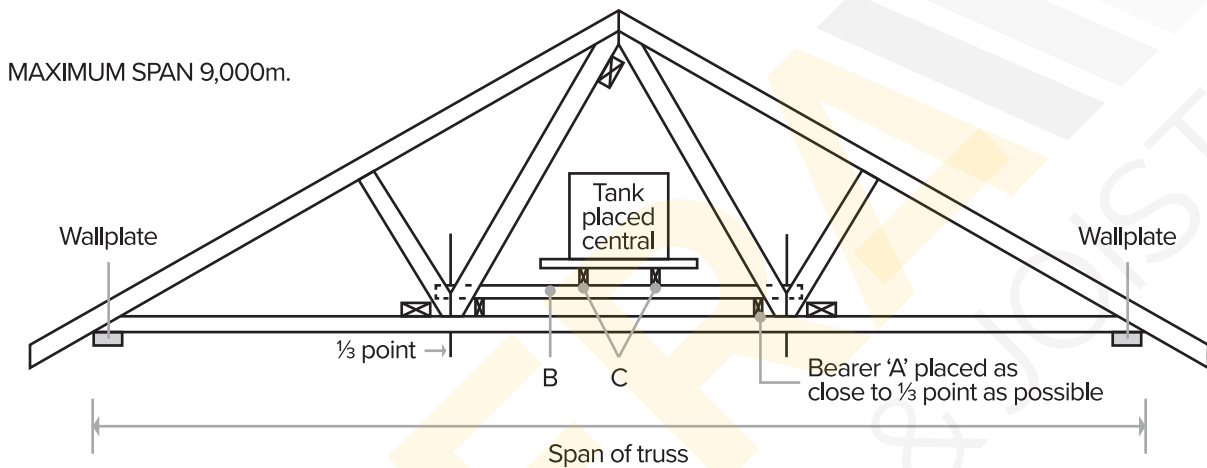


Cold Water Storage Tank Platform Detail

Water storage tank support detail in accordance with BS 5268 Part III for maximum span of truss 9.000m. Maximum tank size 300 litres supported on 4 trussed rafters (as Detailed A) OR 230 litres supported on 3 trussed rafters (as Detail B).



ALTERNATIVE SUPPORT BETWEEN MEMBERS

Where space is limited this detail may be used between members A & B and B & C in order to gain head room. However, a minimum clearance of 25mm above the ceiling lining should be allowed, for possible deflection.

